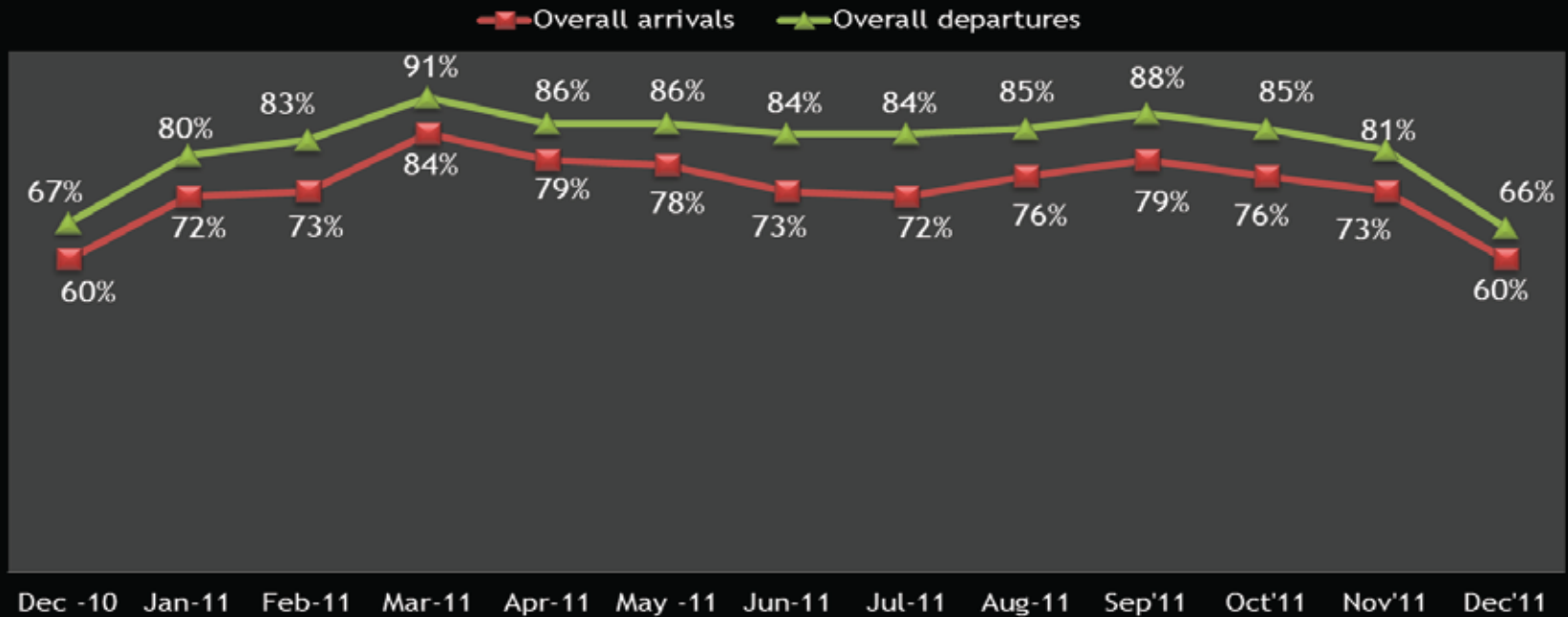


Bengaluru International Airport

Departure & Arrival Ontime monitor at BIAL – 12 months Trend

Airport punctuality performance since Dec 2010

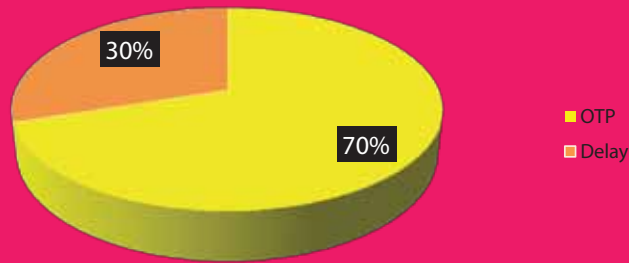


Bengaluru International Airport

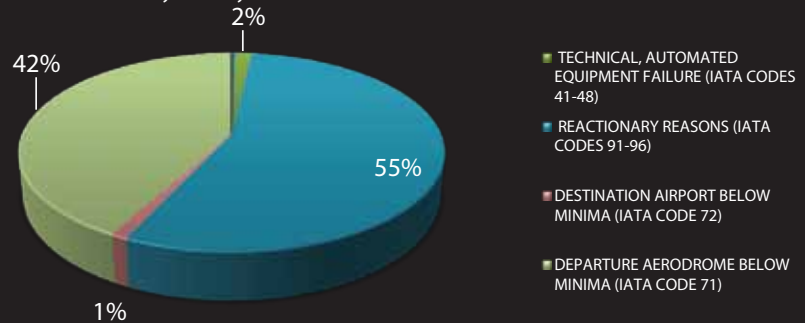
Flight Delays from 0301-0900 - Dec. 2011

AIRLINES	TOTAL DEPARTURES	FLIGHTS ON TIME (STD + 15 min)	FLIGHTS DELAYED (STD + MORE THAN 15 Min)	% ON TIME	% DELAYED	NUMBER OF FLIGHTS DELAYED DUE TO									
						AIRLINES					AIRPORT		WEATHER		ATC
						PASSENGER & BAGGAGE HANDLING (IATA CODES 11-18)	AIRCRAFT & RAMP HANDLING (IATA CODES 31-39)	TECHNICAL, AUTOMATED EQUIPMENT FAILURE (IATA CODES 41-48)	OPERATIONS, CREW (IATA CODES 61-69)	REACTIONARY REASONS (IATA CODES 91-96)	AIRPORT FACILITIES (IATA CODES 87,89)	AIRPORT SECURITY (IATA CODE 85)	DESTINATION AIRPORT BELOW MINIMA (IATA CODE 72)	DEPARTURE AERODROME BELOW MINIMA (IATA CODE 71)	ATFM (IATA CODES 81-84)
AI	161	110	51	68	32					33				18	
G8	62	45	17	73	27					10		1		6	
6E	251	171	80	68	32	1				40				39	
9W	304	240	64	79	21					32		1		31	
IT	303	205	98	68	32			3		52				43	
SG	123	86	37	70	30			1		22		1		13	
S2	92	61	31	66	34			2		19		1		9	
				70%	30%										
Summary															
OTP	70%														
Delay	30%														

OTP for 0301 hrs to 0900 hrs - DEC 2011



Summary of Delay for the Time Frame 0301 hrs to 0900 hrs

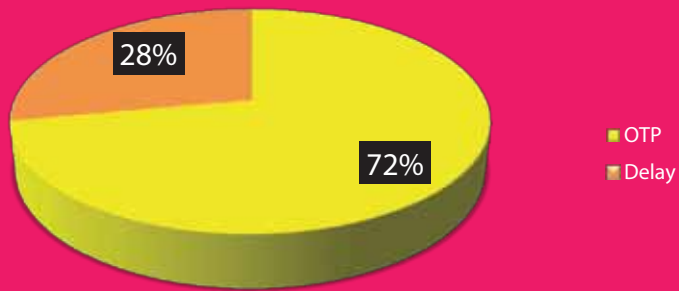


Bengaluru International Airport

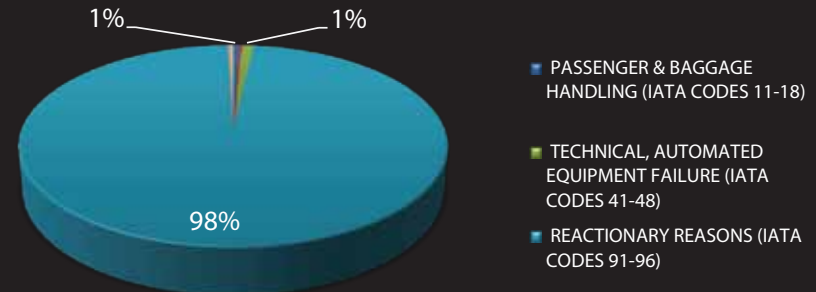
Flight Delays from 0901-1500 - Dec. 2011

AIRLINES	TOTAL DEPARTURES	FLIGHTS ON TIME (STD + 15 min)	FLIGHTS DELAYED (STD + MORE THAN 15 Min)	% ON TIME	% DELAYED	NUMBER OF FLIGHTS DELAYED DUE TO									
						AIRLINES					AIRPORT		WEATHER		ATC
						PASSENGER & BAGGAGE HANDLING (IATA CODES 11-18)	AIRCRAFT & RAMP HANDLING (IATA CODES 31-39)	TECHNICAL, AUTOMATED EQUIPMENT FAILURE (IATA CODES 41-48)	OPERATIONS, CREW (IATA CODES 61-69)	REACTIONARY REASONS (IATA CODES 91-96)	AIRPORT FACILITIES (IATA CODES 87,89)	AIRPORT SECURITY (IATA CODE 85)	DESTINATION AIRPORT BELOW MINIMA (IATA CODE 72)	DEPARTURE AERODROME BELOW MINIMA (IATA CODE 71)	ATFM (IATA CODES 81-84)
AI	133	82	51	62	38					51					
G8	48	37	11	77	23					11					
6E	202	157	45	78	22					45					
9W	436	360	76	83	17					76					
IT	369	213	156	58	42		1	3		152					
SG	124	99	25	80	20	1				24					
S2	109	77	32	71	29	1		1		28			1	1	0
				72%	28%										
Summary															
OTP	72%														
Delay	28%														

OTP from 0901 hrs to 1500 hrs - DEC 2011



Summary of Delay for the Time frame 0901 hrs to 1500 hrs

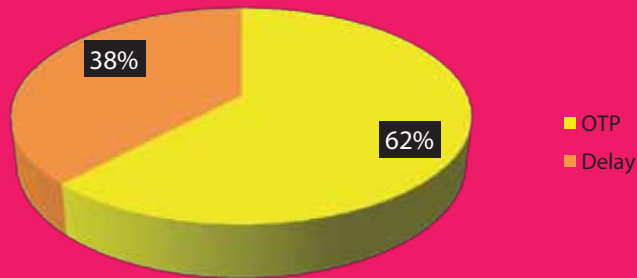


Bengaluru International Airport

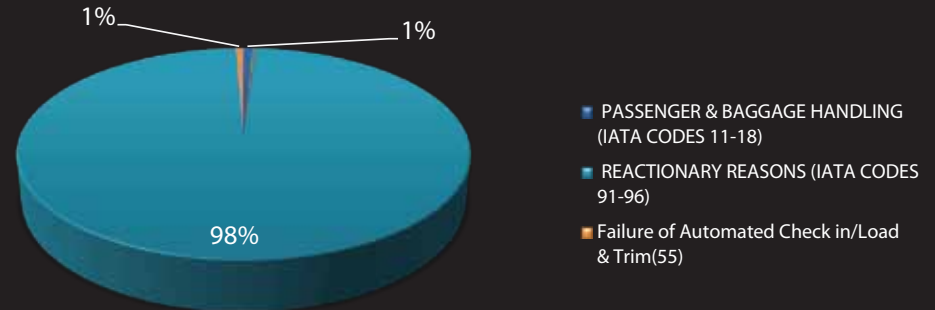
Flight Delays from 1501-2300 - Dec. 2011

AIRLINES	TOTAL DEPARTURES	FLIGHTS ON TIME (STD + 15 min)	FLIGHTS DELAYED (STD + MORE THAN 15 Min)	% ON TIME	% DELAYED	NUMBER OF FLIGHTS DELAYED DUE TO									Mandatory Security Procedure Including Baggage identification (02)	Failure of Automated Check in/Load & Trim(55)	
						AIRLINES					AIRPORT		WEATHER				ATC
						PASSENGER & BAGGAGE HANDLING (IATA CODES 11-18)	AIRCRAFT & RAMP HANDLING (IATA CODES 31-39)	TECHNICAL, AUTOMATED EQUIPMENT FAILURE (IATA CODES 41-48)	OPERATIONS, CREW (IATA CODES 61-69)	REACTIONARY REASONS (IATA CODES 91-96)	AIRPORT FACILITIES (IATA CODES 87,89)	AIRPORT SECURITY (IATA CODE 85)	DESTINATION AIRPORT BELOW MINIMA (IATA CODE 72)	DEPARTURE AERODROME BELOW MINIMA (IATA CODE 71)			ATFM (IATA CODES 81-84)
AI	178	104	74	58	42					74							
G8	111	96	15	86	14					15							
6E	270	196	74	73	27	3			1	69					1		
9W	628	491	137	78	22	1				137							
IT	310	139	171	45	55					169							
SG	238	145	93	61	39			1		88						4	
S2	116	40	76	34	66	1				75							
				62%	38%												
Summary																	
OTP	62%																
Delay	38%																

OTP for 1501 hrs to 2300 hrs - DEC 2011



Summary of Delay for Time Frame 1501 hrs to 2300 hrs

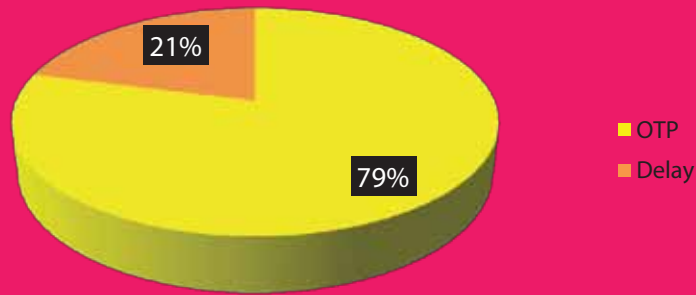


Bengaluru International Airport

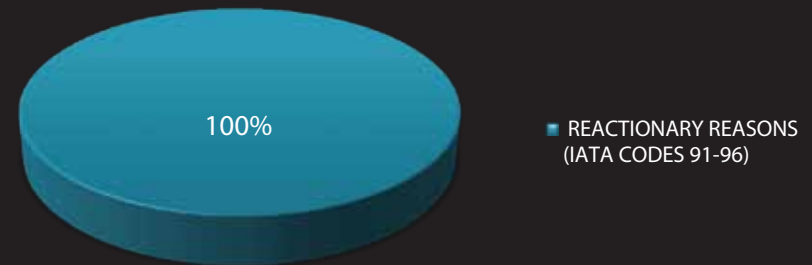
Flight Delays from 2301-0300- Dec. 2011

AIRLINES	TOTAL DEPARTURES	FLIGHTS ON TIME (STD + 15 min)	FLIGHTS DELAYED (STD + MORE THAN 15 Min)	% ON TIME	% DELAYED	NUMBER OF FLIGHTS DELAYED DUE TO													
						AIRLINES					AIRPORT		WEATHER		ATC				
						PASSENGER & BAGGAGE HANDLING (IATA CODES 11-18)	AIRCRAFT & RAMP HANDLING (IATA CODES 31-39)	TECHNICAL, AUTOMATED EQUIPMENT FAILURE (IATA CODES 41-48)	OPERATIONS, CREW (IATA CODES 61-69)	REACTIONARY REASONS (IATA CODES 91-96)	AIRPORT FACILITIES (IATA CODES 87,89)	AIRPORT SECURITY (IATA CODE 85)	DESTINATION AIRPORT BELOW MINIMA (IATA CODE 72)	DEPARTURE AERODROME BELOW MINIMA (IATA CODE 71)	ATFM (IATA CODES 81-84)				
AI	0	0	0	0	0														
G8	7	0	0	0	0														
6E	0	0	0	0	0														
9W	29	23	6	79	21					6									
IT	0	0	0	0	0														
SG	0	0	0	0	0														
S2	0	0	0	0	0														
				79%	21%														
Summary																			
OTP	79%																		
Delay	21%																		

OTP from 2301 hrs to 0300 hrs - DEC 2011



Summary of Delay from Time Frame 2301 hrs to 0300 hrs

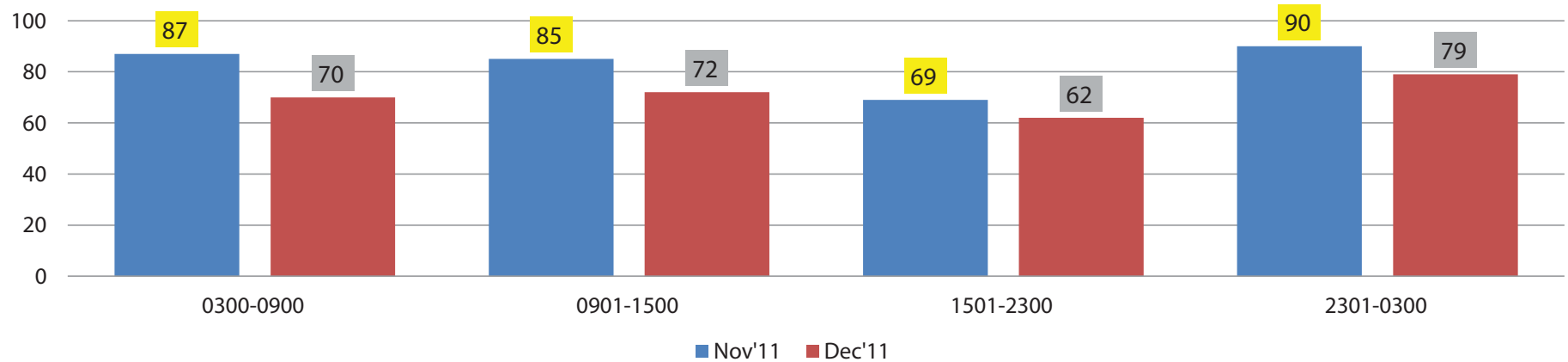


Bengaluru International Airport

Summary of On-time Performance at various timelines - Nov/Dec 2011

Timelines	OTP %		Major Delay Contributors
	Nov'11	Dec'11	
0300-0900	87	70	REACTIONARY REASONS (IATA CODES 91-96) and DEPARTURE AERODROME BELOW MINIMA (IATA CODE 71)
0901-1500	85	72	REACTIONARY REASONS (IATA CODES 91-96)
1501-2300	69	62	REACTIONARY REASONS (IATA CODES 91-96)
2301-0300	90	79	REACTIONARY REASONS (IATA CODES 91-96)

On Time % as per Timelines



Bengaluru International Airport

NUMBER OF FLIGHTS DELAYED DUE TO																							
AIRLINES								AIRPORT				WEATHER				ATC							
	PASSENGER & BAGGAGE HANDLING (IATA CODES 11-18)		AIRCRAFT & RAMP HANDLING (IATA CODES 31-39)		TECHNICAL, AUTOMATED EQUIPMENT FAILURE (IATA CODES 41-48)		OPERATIONS, CREW (IATA CODES 61-69)		REACTIONARY REASONS (IATA CODES 91-96)		AIRPORT FACILITIES (IATA CODES 87,89)		AIRPORT SECURITY (IATA CODE 85)		DESTINATION AIRPORT BELOW MINIMA (IATA CODE 72)		DEPARTURE AERODROME BELOW MINIMA (IATA CODE 71)		ATFM (IATA CODES 81-84)				
Numeric		Numeric		Numeric		Numeric		Numeric		Numeric		Numeric		Numeric		Numeric		Numeric					
11	LATE CHECK-IN, acceptance after deadline	31	AIRCRAFT DOCUMENTATION LATE/ INACCURATE, weight and balance -general	41	AIRCRAFT DEFECTS	61	FLIGHT PLAN, late completion or change of, flight documentation	91	LOAD CONNECTION, awaiting load from another flight	87	Airport Facilities, Parking stands, Ramp Congestion, Lightings, Buildings, Gate Limitations	85	Mandatory Security	72	DESTINATION STATION	71	DEPARTURE STATION	81					ATFM DUE TO ATC EN-ROUTE
12	LATE CHECK-IN, congestion in check-in area.	32	LOADING /UNLOADING, bulky, special load, cabin load, lack of loading staff.	42	SCHEDULED MAINTENANCE, late release	62	OPERATIONAL REQUIREMENTS, fuel, load alteration	92	THROUGH CHECK-IN ERROR, passenger and baggage	89	RESTRICTION AT AIRPORT OF DEPARTURE WITH OR WITHOUT ATFM RESTRICTION, including Air Traffic Services, start up and pushback, airport and/or runway closed due to obstruction of weather (restriction due to weather)							82				DEMAND/CAPACITY, standard demand capacity problems	
13	CHECK-IN ERROR, passenger and baggage	33	LOADING EQUIPMENT, lack of or breakdown e.g. container pallet loader, lack of staff	43	NON-SCHEDULED MAINTENANCE, special checks and/or additional works beyond normal maintenance schedule	63	LATE CREW BOARDING OR DEPARTURE PROCEDURES, other than connection and standby(flight deck or entire crew)	93	AIRCRAFT ROTATION, late arrival of aircraft from another flight or previous sector.									83				ATFM DUE TO ATC EN-ROUTE STAFF/EN-ROUTE reduced capacity closed by industrial action or staff shortage equipment failure, extraordinary demand due to capacity reduction in neighboring area.	
14	OVERSALES, booking errors	34	SERVICING EQUIPMENT, lack of or breakdown, lack of staff, e.g. steps	44	SPARES AND MAINTENANCE, lack of or breakdown	64	FLIGHT DECK CREW SHORTAGE, sickness, awaiting standby, flight time limitations, crew meals, valid visa, health documents, etc.	94	CABIN CREW ROTATION, awaiting cabin crew from another flight									84				ATFM DUE TO RESTRICTION AT DESTINATION AIRPORT, airport and or runway closed due to obstruction industrial action, staff shortage, political unrest, noise abatement, night curfew, special	
15	BOARDING, discrepancies and paging, missing checked -in passenger	35	AIRCRAFT CLEANING	45	AOG SPARES, to be carried to another station	65	FLIGHT DECK CREW SPECIAL REQUEST, not within operational requirements	95	CREW ROTATION, awaiting crew from another flight(flight deck or entire crew)														
16	COMMERCIAL PUBLICITY/ PASSENGER CONVENIENCE, VIP, press, ground meals, and missing personal items.	36	FUELLING/DEFUELLING, fuel supplier	46	AIRCRAFT CHANGE, for technical reasons	66	LATE CABIN CREW BOARDING OR DEPARTURE PROCEDURES, other than connection and standby	96	OPERATIONS CONTROL, rerouting, diversion, consolidation, aircraft change for reasons other than technical														
17	CATERING ORDER, late or incorrect order given to supplier	37	CATERING, late delivery or loading	47	STANDBY AIRCRAFT, lack of planned standby aircraft for technical reasons	67	CABIN CREW SHORTAGE, sickness awaiting standby, flight time limitations, crew meals, valid visa, health documents, etc.																
18	BAGGAGE PROCESSING, sorting, etc.	38	ULD, lack of or serviceability	48	SCHEDULED CABIN CONFIGURATION/VERSION ADJUSTMENTS	68	CABIN CREW ERROR OR SPECIAL REQUEST, not within operational requirements.																
		39	TECHNICAL EQUIPMENT, lack of or breakdown, lack of staff, e.g. push back			69	CAPTAIN REQUEST FOR SECURITY CHECK, extraordinary																